

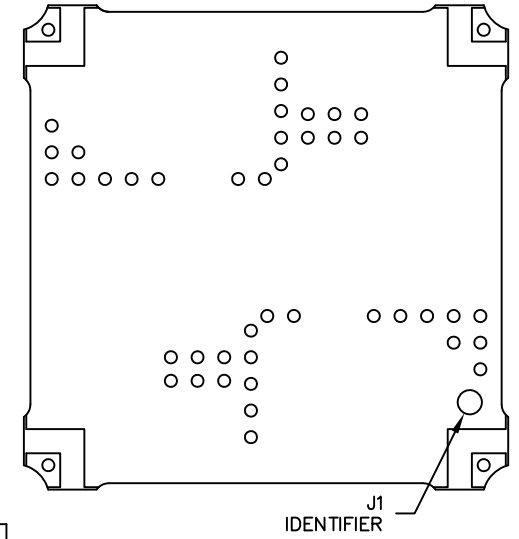
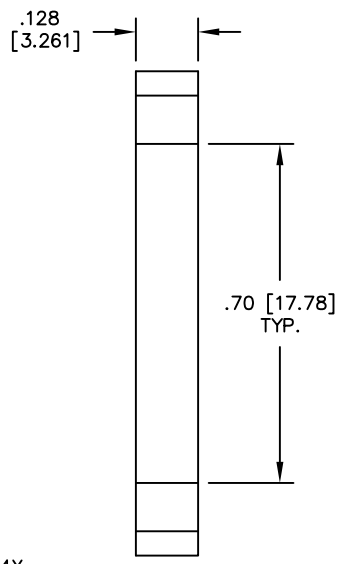
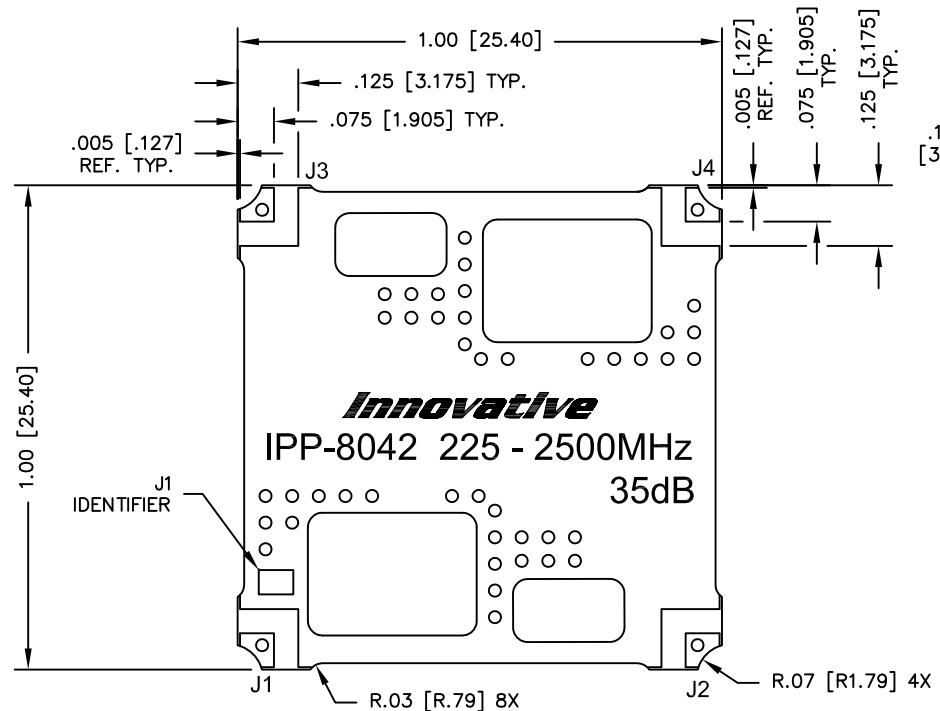
UNAUTHORIZED USE OF THIS
DRAWING IS STRICTLY PROHIBITED

DAR	REV	DESCRIPTION	APPVD	DATE
2841	A	INITIAL RELEASE	DG	12-10
2930	B	SEE DAR	DG	2-11
3121	C	SEE DAR	DG	6-11
3884	D	SEE DAR	TJD	8-12
3964	E	SEE DAR	TJD	10-12
4034	F	SEE DAR	TJD	11-12
4191	G	SEE DAR	DG	3-13
4355	H	SEE DAR	DG	6-13
4450	J	SEE DAR	DG	7-13

NOTES:

1. SEE SMD COUPLER APPLICATION NOTE FOR FURTHER INFORMATION.
2. AVAILABLE IN TAPE AND REEL. SEE SMD COUPLER APPLICATION NOTE FOR FURTHER INFORMATION.
3. DO NOT EXCEED 220°C WHEN INSTALLING COUPLER.

PORT CONFIGURATION			
INPUT	OUTPUT	FORWARD COUPLED	REFLECTED COUPLED
J3	J2	J1	J4
J2	J3	J4	J1



ELECTRICAL SPECIFICATIONS

FREQUENCY:	225 - 2500 MHz.
INSERTION LOSS:	<0.30 dB
MAIN LINE VSWR:	<1.25:1
COUPLING:	35dB ±1.5 dB
DIRECTIVITY:	>18 dB
COUPLED FLATNESS:	±1.0dB
POWER:	100 WATT
TEMPERATURE:	-55°C TO 85°C

FINISH	
P/N	TYPE
IPP-8042	TIN/LEAD

MATERIAL	DWN S.Cornell	DATE 10-22-10				
FINISH	ENG DG	DATE 10-10				
SEE FINISH CHART	MANUF	DATE	TITLE OUTLINE, SMD COUPLER			
TOLERANCE	CAGE CODE: 437R2		DUAL DIRECTIONAL, 225 - 2500 MHz. 100W			
IN [MM]	.XX ±.02 [.50]	SHEET OF 1 1	SCALE 4:1	SIZE B	P/N IPP-8042*	REV. J
	.XXX ±.010 [.254]					
	ANG. ±1/2°					